

Iceland
Liechtenstein
Norway grants

anpcdefp 



**CORELAREA COMPETENȚELOR DIN DOMENIUL
TEHNICII DE CALCUL DEZVOLTATE ÎN ȘCOALĂ
CU INTERESELE MEDIULUI DE AFACERI**

**PROGRAMUL DE EDUCAȚIE, BURSE, UCENICIE ȘI ANTREPRENORIATUL
TINERILOR, ÎN ROMÂNIA**

FINANȚAT PRIN GRANTURILE SEE 2014-2021

APEL PENTRU PROPUNERI DE PROIECTE 2022

**PROIECTE BILATERALE DE FORMARE PROFESIONALĂ PENTRU DECIDENTI POLITICI
ȘI REPREZENTANȚI AI UNITĂȚILOR DE ÎNVĂȚĂMÂNT DIN ÎNVĂȚĂMÂNTUL
PROFESIONAL ȘI TEHNIC (ÎPT)**

Obiectivele proiectului



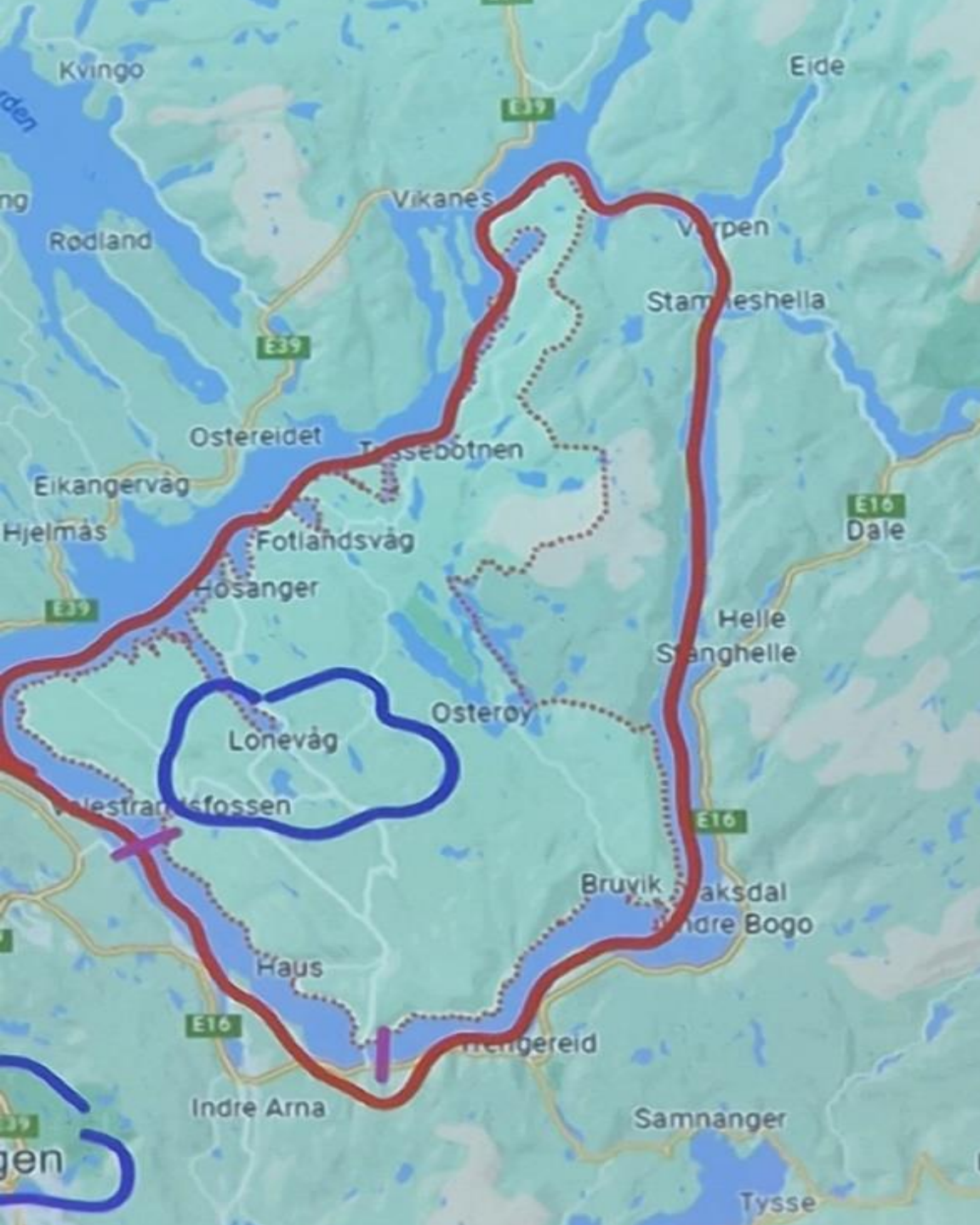
1. Îmbunătățirea relațiilor de cooperare între școală și mediul de afaceri pentru o formare inovativă în stagiile de pregătire practică pentru elevii care se formează în domeniul tehnic.
2. Creșterea calității stagiilor de pregătire practică pentru formarea elevilor din domeniul tehnic.

Bergen - Norvegia









Island 397 square meters
Mountain 867 m
Inhabitants 8160



Osterøy



Durata : 4 ani



Anul I: – invatamant (formare profesionala in scoala)

Anul II: – invatamant (formare profesionala in scoala)

Anul III: – ucenicie in intreprindere

Anul IV: – ucenicie in intreprindere

Skills + knowledge = expertise

Vocational training programs

Electrical engineering
and computer
technology

Technological and
industrial
production

Healthcare,
childhood and youth
development

Electrical power

Industrial
technology

Health work

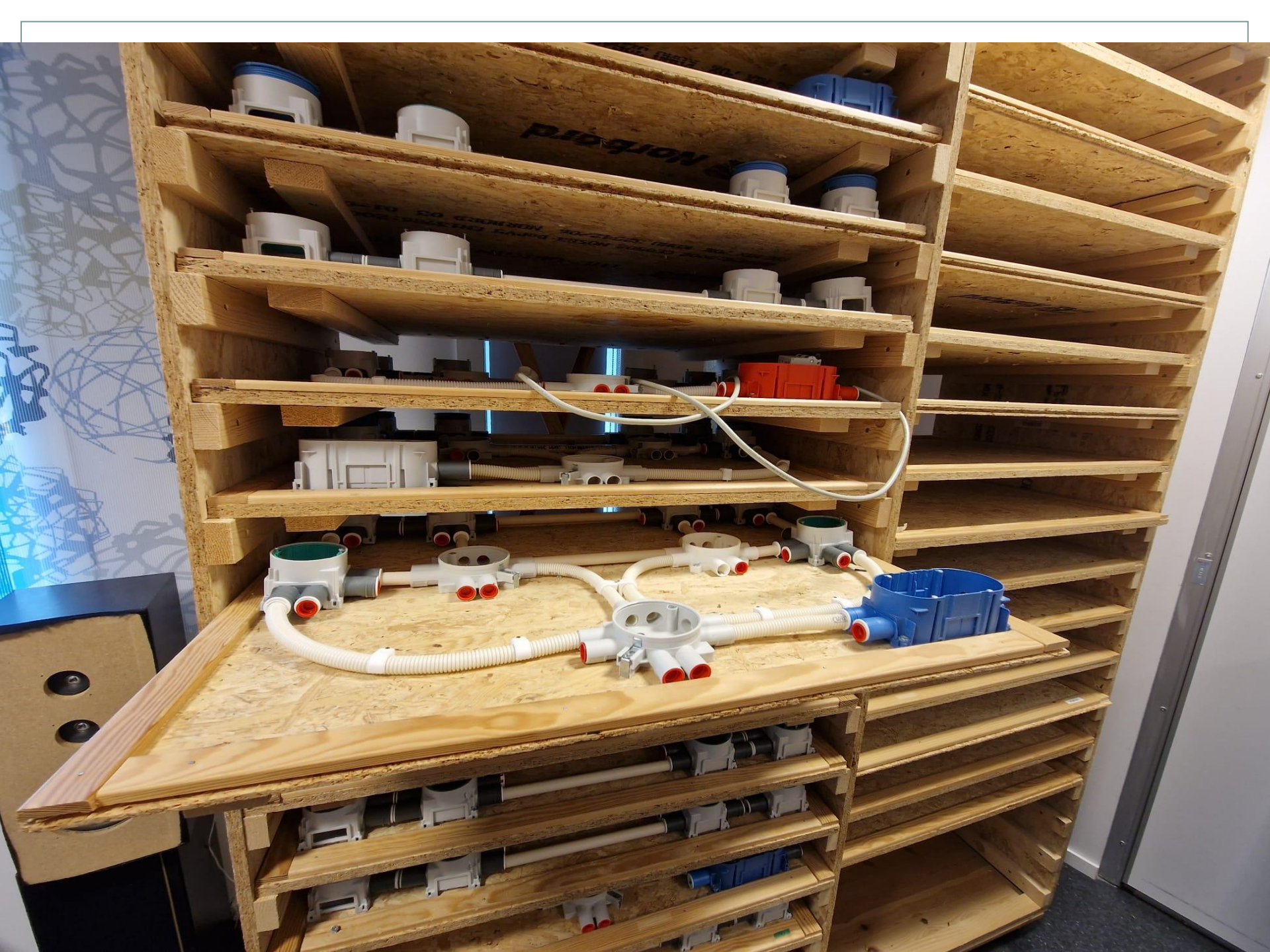
28

54

27











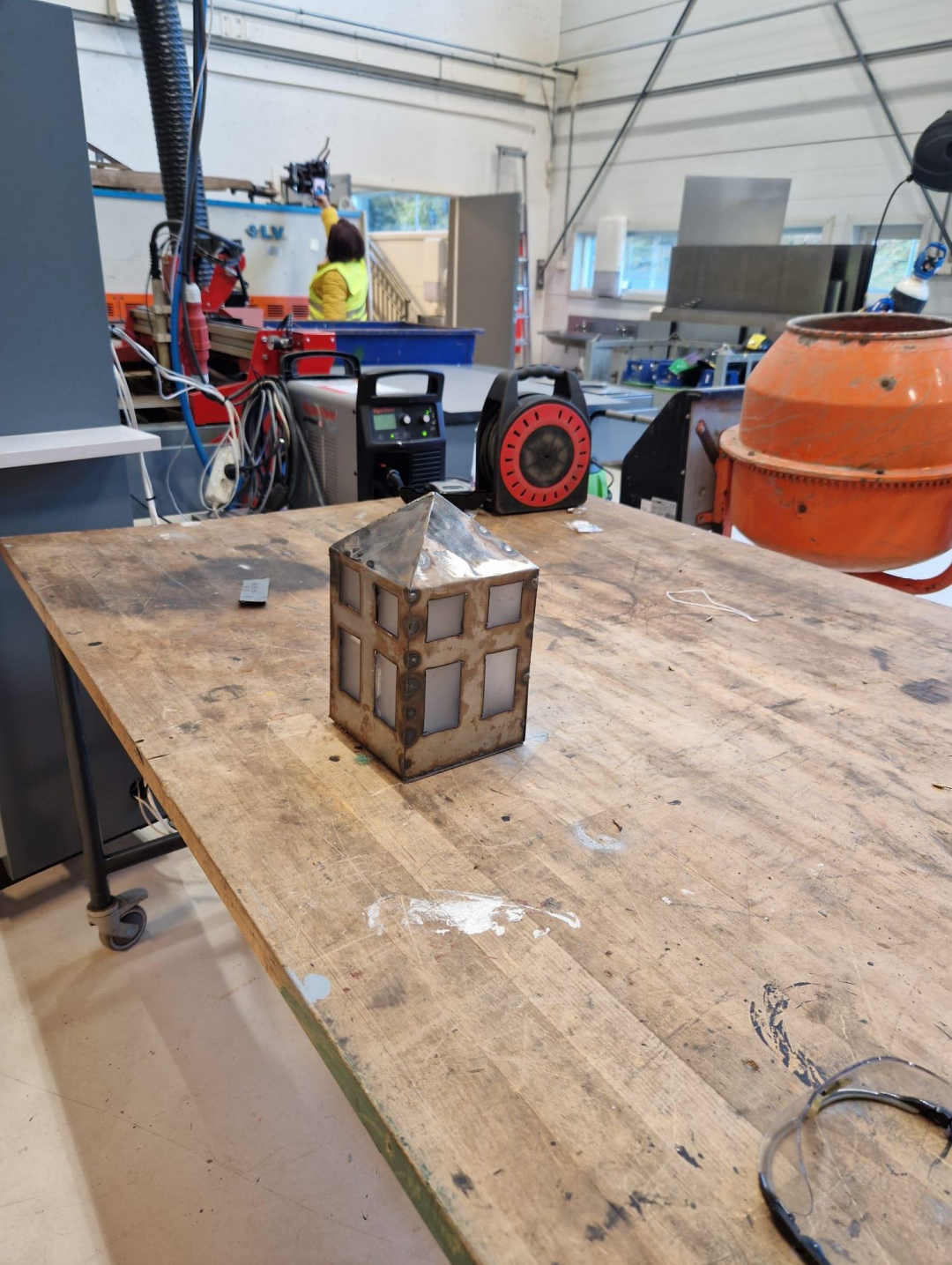


MAXXTURN 65

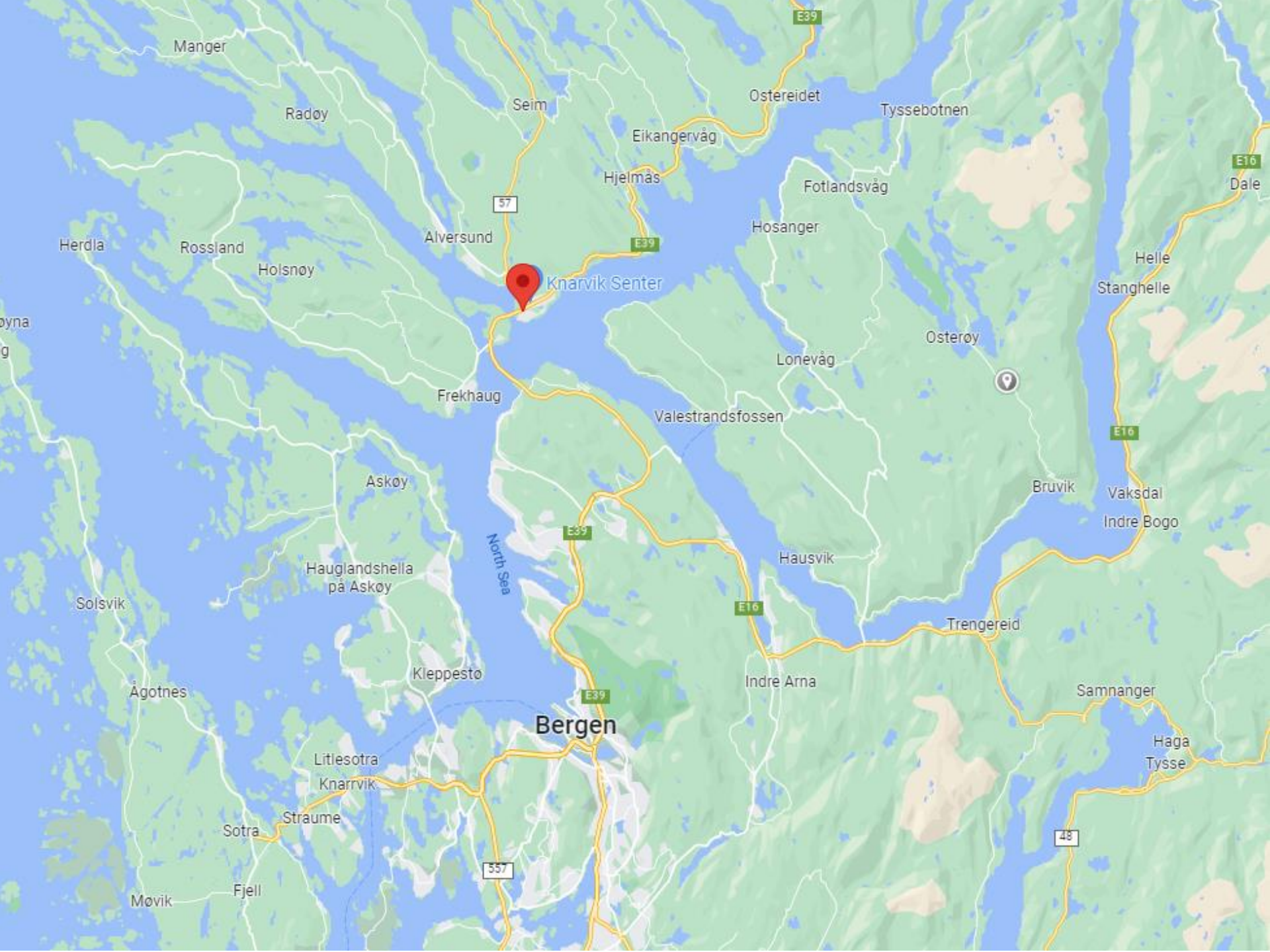
easy cnc
by Imperietek

Imperietek









Manger

Radøy

Seim

Ostereidet

Tyssebotnen

Herdla

Rosslund

Holsnøy

Alversund

Hjelmås

Eikangervåg

Fotlandsvåg

Hosanger

Helle

Stanghelle

Knarvik Senter

Osterøy

Lonevåg

Frekhaug

Valestrandfossen

Askøy

Bruvik

Vaksdal

Indre Bogo

Solsvik

Hauglandshella på Askøy

Hausvik

Ågotnes

Kleppesto

Bergen

Indre Arna

Trengereid

Samnanger

Litlesotra

Knarvik

Haga

Tysse

Sotra

Straume

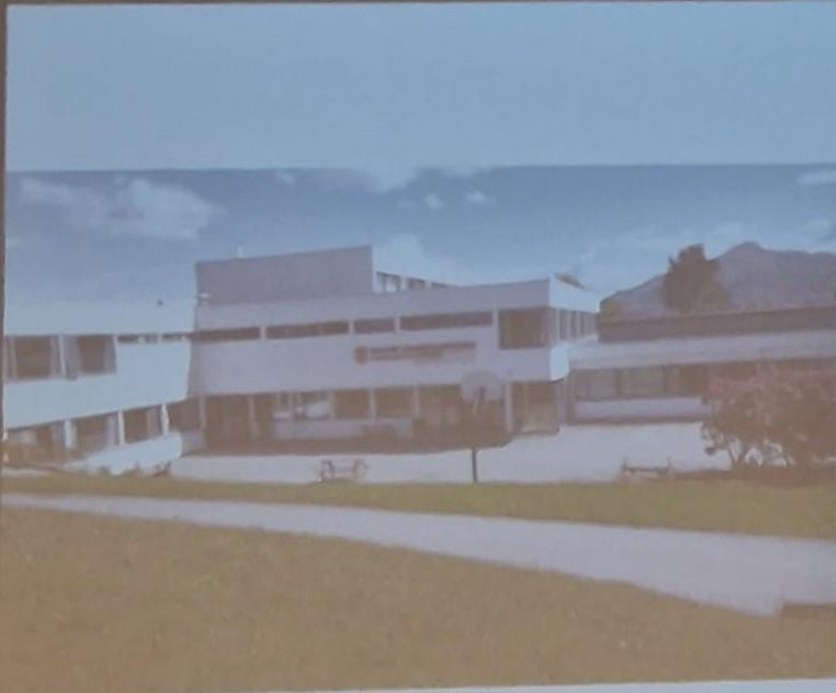
Møvik

Fjell

557

48

Knarvik



About our school

950 students

2 main buildings, 5 mins apart in Knarvik

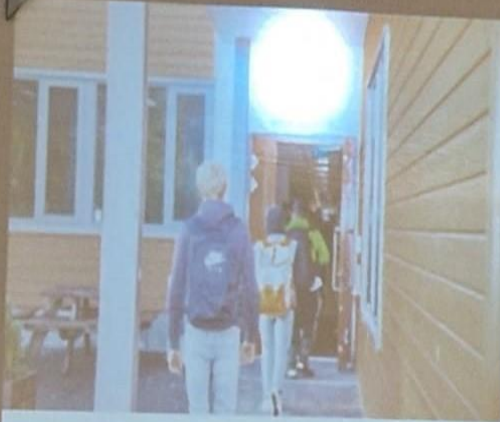
4 departments

1) A-levels

2) Vocational programmes (health and education, building and construction, design, technology and mechanics)

3) A-levels plus vocational training («TAF») – ready for further studies, as well as certificate of apprenticeship

4) Special education (i.e. skills training at the workplace)



A-levels subjects

- Biology
 - Maths
 - Physics
 - Chemistry
 - Economics
 - Law
 - Psychology
 - Sociology
 - Politics
 - International English
 - English societies
 - Innovation and students businesses
 - Technology
 - Physical education
- All students must also have Norwegian, English, history and religious studies.

Working week for TAF-students

	Monday	Tuesday	Wednesday	Thursday	Friday
1st year	Workplace	Workplace	School	School	School
2nd year	School	School	School	Workplace	Workplace
3rd year	School	School	School	Workplace	Workplace
4th year	Workplace	Workplace	Workplace	School	School

Students follow holidays for their workplace

School holidays is normally work for the students

Subjects at school

1st year	Maths, English, Science	Vg1 vocational subjects (8 hrs in school)	
2nd year	Maths, Norwegian, PE	Vg2 vocational subjects (12 hrs in school)	
3rd year	Norwegian, History, Social Science	B&C/EL/Mech: Maths and Physics	Health: Physics or Chemistry
4th year	Norwegian, PE	B&C/EL/Mech: Physics	Health: Physics or Chemistry

Joined classes for academic subjects: B&C + Health and Electrics + Mechanical

Admission of TAF-students

- March/April: Workplaces report request for TAF-students to Knarvik Vgs.
- Interviews planned by representatives from companies and TAF-coordinators in each program
 - *Selection based mainly on marks from Year 10 (final year of lower secondary school)*
 - *Each candidate get interviews in two different companies*
 - *Normally 3 candidates per workplace*
 - *Location and logistics are parts of the selection to interview*
- Interviews in middle of June (bottleneck is exam results and marks from schools)
- After interviews:
 - *Companies returns priorities and order of students, with mainly if the students are suitable or not for the workplace*
 - *Students return request of workplaces where they had interviews*
 - *Admission board make the final decisions of admission.*

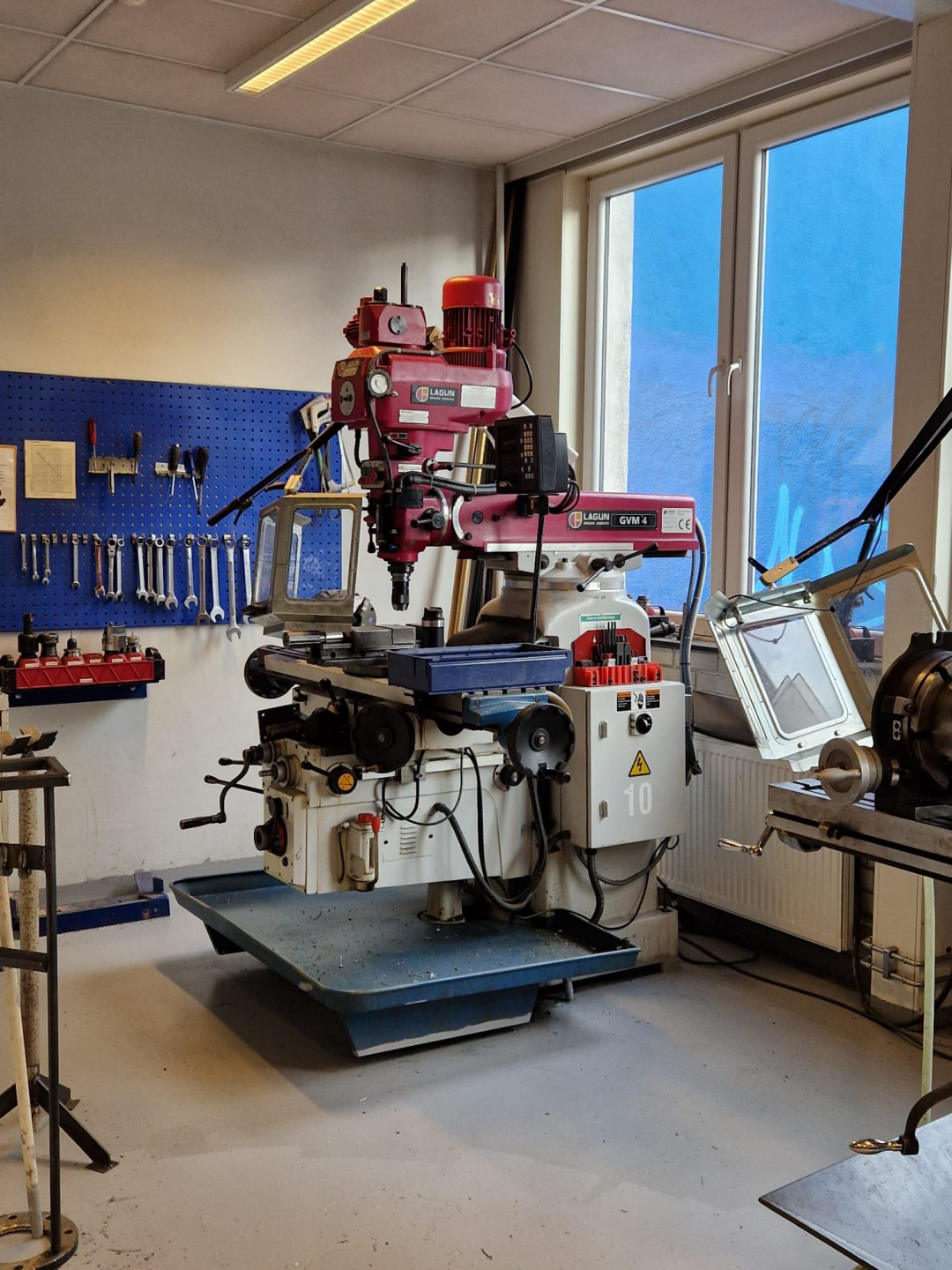




Bergen- Maritim









- 43 public upper secondary schools
- About 20 000 pupils from vg1 to vg3
- 56 % of the pupils start in vocational education
- 60 % of the pupils are located in the Bergen area